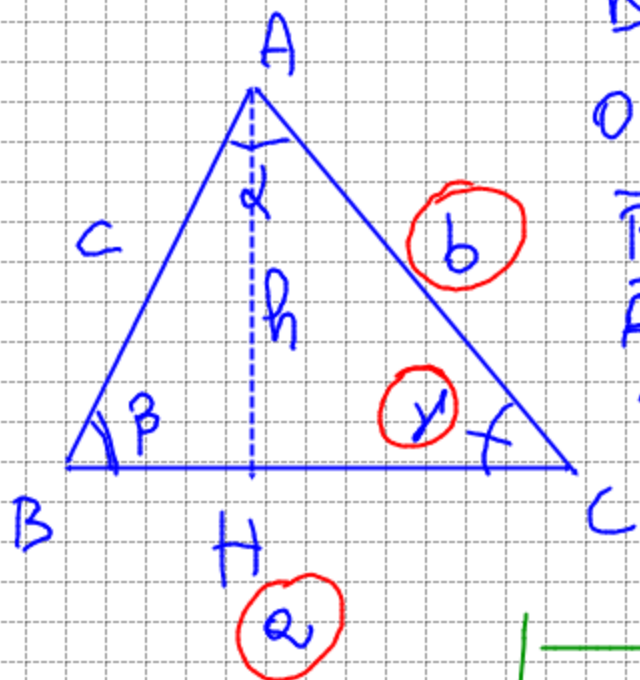


# AREA DEI TRIANGOLI

1)



DATI:

$$0 < \gamma < \frac{\pi}{2}$$

$$\overline{BC} = a$$

$$\overline{AC} = b$$

$$\widehat{BCA} = \gamma$$

$$Q = ?$$

$$Q = \frac{\text{base} \times \text{altezza}}{2}$$

$$h = b \sin \gamma$$

$$Q = \frac{1}{2} a b \sin \gamma$$

$$Q = \frac{1}{2} a c \sin \beta$$

$$Q = \frac{1}{2} b c \sin \alpha$$