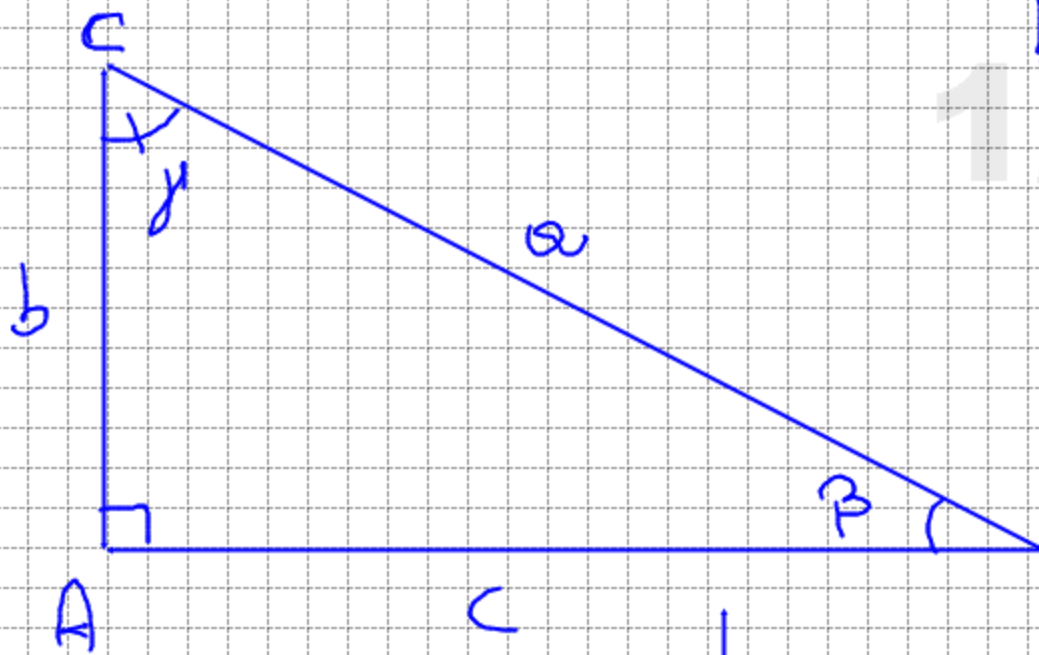


TEOREMI SUI TRIANGOLI RETTANGOLI



$$b = a \operatorname{sen} \beta \quad *$$

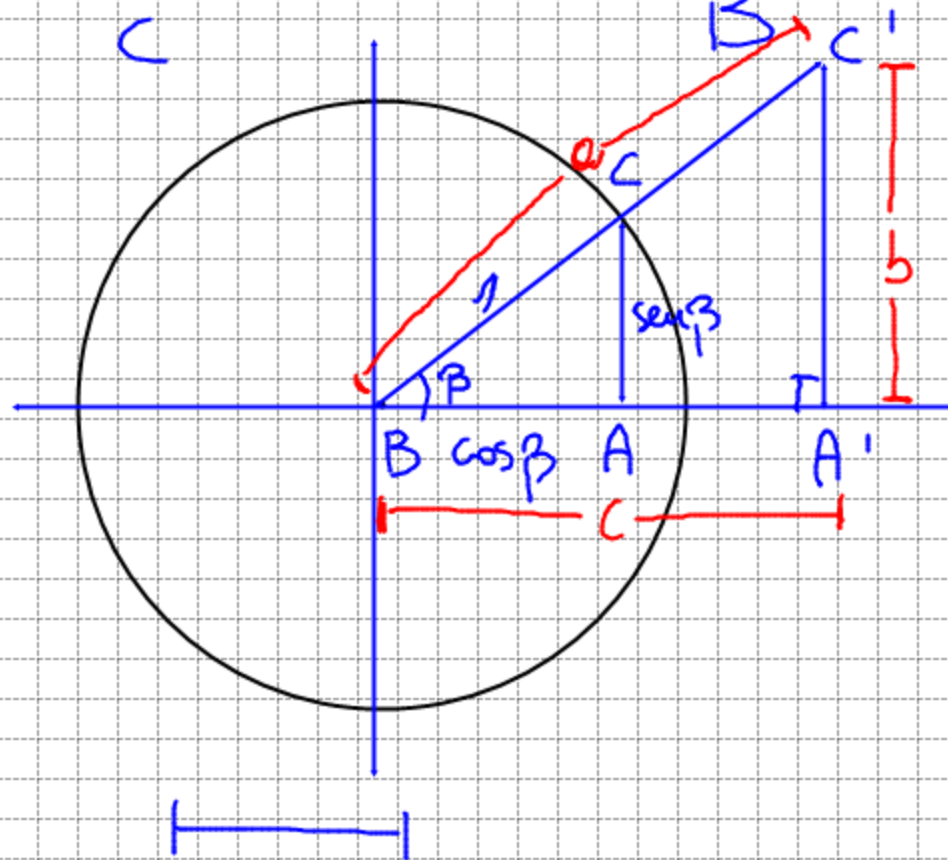
$$b = a \cos \gamma \quad **$$

$$c = a \operatorname{sen} \gamma \quad **$$

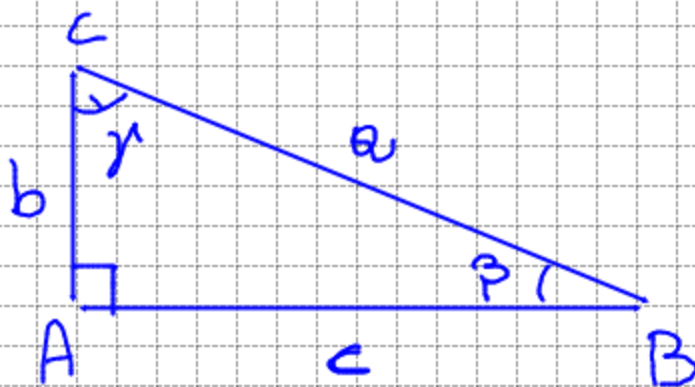
$$c = a \cos \beta \quad *$$

$$\frac{c}{b} = \operatorname{tg} \beta \quad (*)$$

$$\frac{c}{b} = \operatorname{tg} \gamma \quad (**)$$



$$\triangle ABC \cong \triangle A'BC'$$



- conosco a, b, c

$$b = a \cos \gamma \quad \cos \gamma = \frac{b}{a}$$

$$\gamma = \arccos\left(\frac{b}{a}\right)$$

- conosco b, γ

$$a = \frac{b}{\cos \gamma}$$

$$c = a \operatorname{sen} \gamma$$